

# ADAPTER SPOOLS

## API 6A & 16A

### DESIGN/APPLICATION:

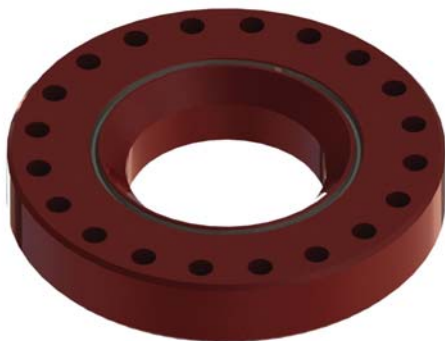
- Fabritech MS, Inc. manufactures Adapter Spools in all size and pressure rating combinations suitable for adapting from one size and or rated working pressure to another. API 16A configuration is for Drill Through operations, while API 6A configurations are not.
- Adapter Spools can also come in the form of Double Studded Adapters (DSA's).

### KEY FEATURES:

- Can be any overall length (OAL) as needed by customer or end user.
- Available in any size and pressure combination.
- Designed for working with H<sub>2</sub>S (Sour Gas Service) and material complies with API 16A 4th Ed., API 6A 21st Ed., MR 0175 requirements, as well as API 16A 4th Ed. and API 6A 21st Ed. Temperature rating requirements. Ring grooves can be regular steel, or CRA (Inconel®).
- Pad eyes/ Lifting eyes and or outlets are not standard on Spacer Spools, but may be added upon request.

### SPECS:

- Working pressure(s): 2,000 PSI – 20,000 PSI
- Size: 1-13/16", 2-1/16", 2-9/16", 3-1/8", 3-1/16", 4-1/16", 5-1/8", 7-1/16", 9", 11", 13-5/8", 16-3/4", 18-3/4", 20-3/4", 21-1/4", 26-3/4", 30".
- Ask your sales representative for clarification of size limitations for API 16A requirements.
- Medium: Natural Gas, Mud, and Oil.
- Working Temperature: -75° F - 250° F (-59° C - 121° C) API 16A 4th Ed. and -46° C-121° C for API 6A 21st Ed.
- Specification Class: PSL-1 through PSL-4 (API 6A)
- Performance Class: PR1
- Monogramable to API 16A or API 6A



A Double Studded Adapter is depicted on the left while an Adapter Spool is depicted on the right in the above renders. Customers have the ultimate responsibility of determining if the spool will be for drill through or wellhead purposes, and if the adapter will be studded or flanged. Ask your sales representative for more information.